



About Apex Park and Recreation District

Apex Park and Recreation District (Apex PRD) is located in Jefferson County, with boundaries roughly corresponding to the City of Arvada. It is a special district with no connection to other government agencies. However, Apex PRD and the City of Arvada share resources and define responsibilities to save taxpayers money. The district generally handles “active” recreation such as sports, fitness, swimming, etc., while the City of Arvada handles “passive” recreation such as parks and trails.

District residents receive a discount on fees, but its facilities and activities are open to the public. About 45% of the district’s budget comes from property taxes. The remaining 55% comes from program and facility fees, grants, and proceeds from Apex PRD Foundation fundraising efforts.

Apex PRD operates 16 facilities within a 60-square-mile area. From pools to gymnastics to athletic fields, the district offers a wide variety of activities, special events, fitness classes and athletics to more than 118,000 residents. The flagship 168,000 square foot Apex Center sees more than one million visitors per year and is self-supporting in its operating costs. Athletic fields within the community, such as Long Lake Ranch, Harold D. Lutz Sports Complex and Stenger Soccer Complex, provide home fields to more than a dozen youth sports organizations with thousands of local and regional youth competing each year.

If you have feedback or questions about the proposed ballot issue, please contact elections@apexprd.org. For more information about Apex Park and Recreation District, visit apexprd.org.



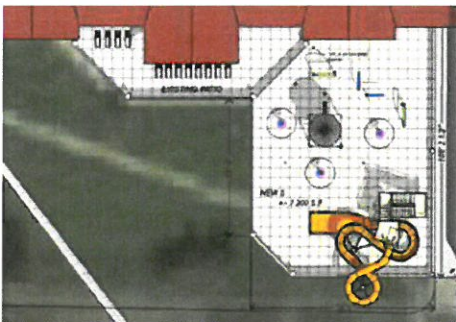
Arvada Tennis Center



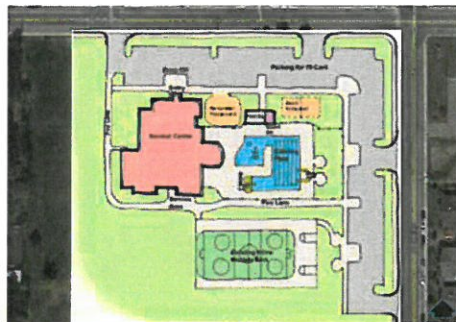
Lutz Sports Complex



Long Lake Ranch Regional Park



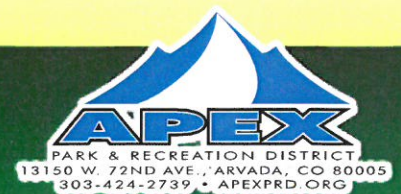
Apex Center - Splash Pad



Secret Center



Fitzmorris Site Center/Pool





About the Ballot Issue

The bond that built the Apex Center in 1998 will be paid off in 2016. Based on extensive public input and professional assessments of community needs, the Apex PRD Board of Directors is considering a proposal to renew the existing bond to build/renovate six district facilities. If approved by voters, renewal of the \$25 million bond for 20 years would fund the following six building/renovation projects, without incurring new taxes.

2016 Election Project Cost Estimates

Arvada Tennis Center	\$5,532,143
Renovation of existing 8 courts including lights, fencing Structure to enclose 4 new courts including associated construction expenses	
Long Lake Ranch Regional Park Improvements	\$4,285,000
2 new fields with backstops. Additional lighting to complete lighting the 5-plex Restroom/concession building. 2 new sports turf fields, parking, lights	
Lutz Sports Complex Improvements	\$4,310,000
New 4-plex fields only, Parking lot, lighting, landscaping, restroom/concession building	
Fitzmorris Site Center/Pool	\$4,842,366
Facility construction cost. Architectural, site construction expenses	
Secret Center	\$7,811,794
Facility construction cost. Architectural, site expenses, development costs	
Apex Center - Renovation, Splash Pad Addition	\$1,504,087
Facility construction cost. Architectural, site expenses, development costs	
Total estimated project budget	<u>\$28,285,390</u>
Amount from Apex PRD General Fund	<u>-\$185,390</u>
Bond amount	<u>-\$25,000,000</u>
Amount the City of Arvada will contribute towards an outdoor pool/rec center	<u>-\$3,100,000</u>

